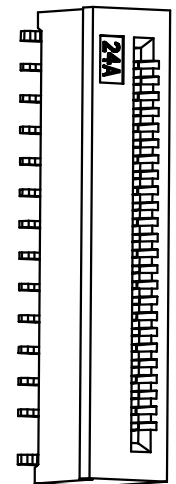
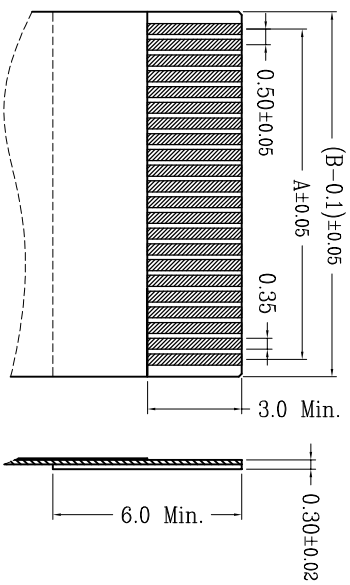
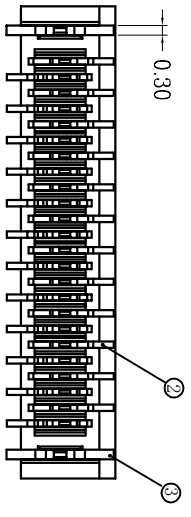
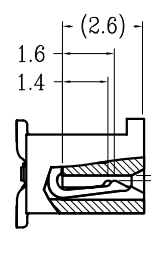
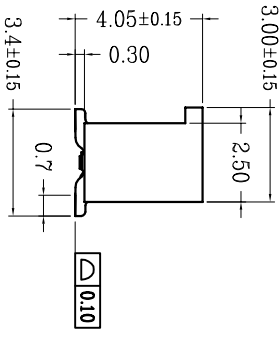
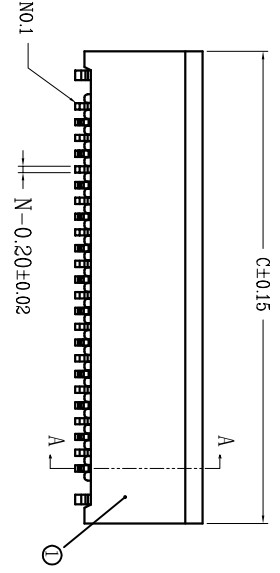
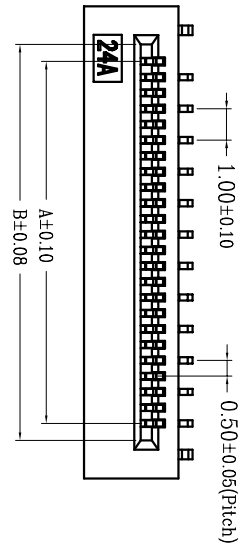


0	增加料号说明 (Add Material Number Description)	2022/08/08	(NO.)	(Name)	(Material)
---	--	------------	-------	--------	------------

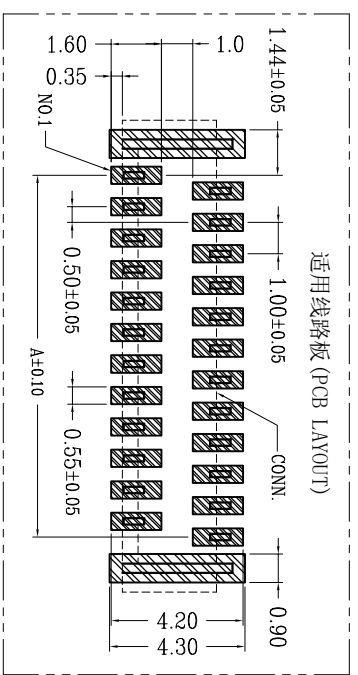


①	0.5 立贴无镀层芯 (H4.0) 0.5 Pitch N-ZIF S/T Type Housing (H=4.0)	LCP UL94V-0 本1
②	0.5 立贴无镀端子 (H4.0) 0.5 Pitch N-ZIF S/T Type Terminal (H=4.0)	磷青铜/表面镀锡 Phosphor Bronze Tin Plating
③	0.5 立贴无镀焊片 (H4.0) 0.5 Pitch N-ZIF S/T Type Fitting Nail (H=4.0)	黄铜/表面镀锡 Brass/Tin Plati



技术指标 (Technical Index):

1. 塑件表面应光洁、无毛边、无明显收缩、缺陷、裂纹等现象。
(The surface of the plastic parts should be smooth, no rough edges, no obvious shrinkage, defects, cracks and other phenomena.)
2. 温度范围 (Temperature range): -25° C~+85° C.
3. 额定电压 (Rated voltage): 50V, AC/DC (=等效).
4. 接触电阻 (Contact resistance): ≤0.03Ω.
5. 绝缘电阻 (Insulation resistance): ≥500MΩ.



CKT	A	B	C	CKT	A	B	C
4	1.5	2.58	5.0	33	16.0	17.08	19.5
5	2.0	3.08	5.5	34	16.5	17.58	20.0
6	2.5	3.58	6.0	35	17.0	18.08	20.5
7	3.0	4.08	6.5	36	17.5	18.58	21.0
8	3.5	4.58	7.0	37	18.0	19.08	21.5
9	4.0	5.08	7.5	38	18.5	19.58	22.0
10	4.5	5.58	8.0	39	19.0	20.08	22.5
11	5.0	6.08	8.5	40	19.5	20.58	23.0
12	5.5	6.58	9.0	41	20.0	21.08	23.5
13	6.0	7.08	9.5	42	20.5	21.58	24.0
14	6.5	7.58	10.0	43	21.0	22.08	24.5
15	7.0	8.08	10.5	44	21.5	22.58	25.0
16	7.5	8.58	11.0	45	22.0	23.08	25.5
17	8.0	9.08	11.5	46	22.5	23.58	26.0
18	8.5	9.58	12.0	47	23.0	24.08	26.5
19	9.0	10.08	12.5	48	23.5	24.58	27.0
20	9.5	10.58	13.0	49	24.0	25.08	27.5
21	10.0	11.08	13.5	50	24.5	25.58	28.0
22	10.5	11.58	14.0	51	25.0	26.08	28.5
23	11.0	12.08	14.5	52	25.5	26.58	29.0
24	11.5	12.58	15.0	53	26.0	27.08	29.5
25	12.0	13.08	15.5	54	26.5	27.58	30.0
26	12.5	13.58	16.0	55	27.0	28.08	30.5
27	13.0	14.08	16.5	56	27.5	28.58	31.0
28	13.5	14.58	17.0	57	28.0	29.08	31.5
29	14.0	15.08	17.5	58	28.5	29.58	32.0
30	14.5	15.58	18.0	59	29.0	30.08	32.5
31	15.0	16.08	18.5	60	29.5	30.58	33.0
32	15.5	16.58	19.0				

深圳市鸿锐盛电子有限公司



一般公差 (TOLERANCE)
X ±0.50 XX ±1.0
X ±0.20 XXX ±0.05
ANGLES 3°

品名 (NAME)	0.5 Pitch 立贴无镀正脚位 (H=4.0)	制图 (DWG)
料号 (DRAWING)	0.5 Pitch H4.0 N-ZIF S/T Positive Pin Type CONN. 投灯	审核 (CHECK)
比例 (SCALE)	1:1	单位 (UNIT)
		张数 (SHEET)
		1 OF 1
		SIZE
		A4
		REV
		A